

INDIAN SPRING GOLF COURSE

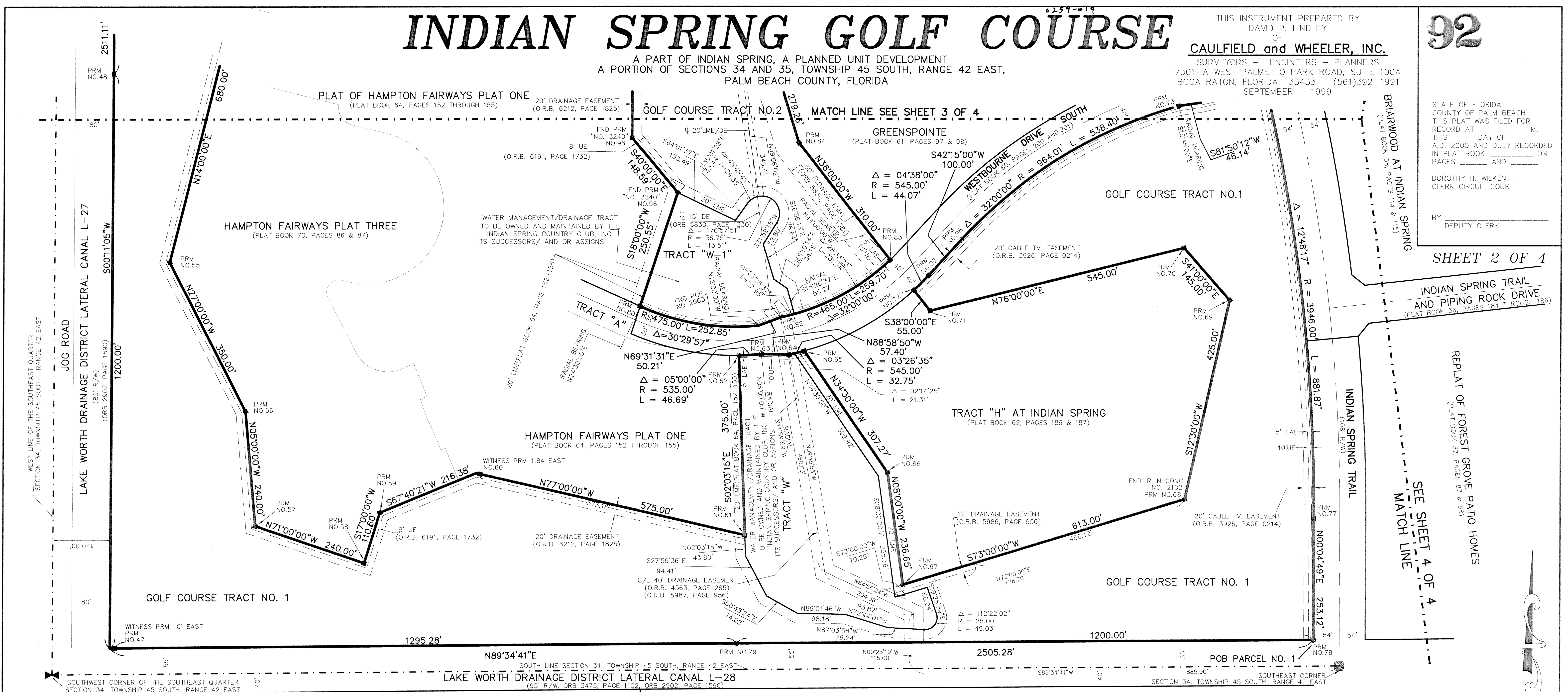
A PART OF INDIAN SPRING, A PLANNED UNIT DEVELOPMENT
A PORTION OF SECTIONS 34 AND 35, TOWNSHIP 45 SOUTH, RANGE 42 EAST,
PALM BEACH COUNTY, FLORIDA

THIS INSTRUMENT PREPARED BY
DAVID P. LINDLEY
OF
CAULFIELD and WHEELER, INC.
SURVEYORS - ENGINEERS - PLANNERS
7301-A WEST PALMETTO PARK ROAD, SUITE 100A
BOCA RATON, FLORIDA 33433 - (561)392-1991
SEPTEMBER - 1999

92

STATE OF FLORIDA
COUNTY OF PALM BEACH
THIS PLAT WAS FILED FOR
RECORD AT _____ M.
THIS _____ DAY OF _____
A.D. 2000 AND DULY RECORDED
IN PLAT BOOK _____ ON
PAGES _____ AND _____
DOROTHY H. WILKEN
CLERK CIRCUIT COURT
BY: _____
DEPUTY CLERK

SHEET 2 OF 4



INDIAN SPRING TRAIL AND PIPING ROCK DRIVE (PLAT BOOK 36, PAGES 184 THROUGH 186)

REPLAT OF FOREST GROVE PATIO HOMES (PLAT BOOK 37, PAGES 87 & 88)

SEE SHEET 4 OF 4 MATCH LINE

INDIAN SPRING TRAIL (PLAT BOOK 37, PAGES 87 & 88)

INDIAN SPRING TRAIL (PLAT BOOK 37, PAGES 87 & 88)

INDIAN SPRING TRAIL (PLAT BOOK 37, PAGES 87 & 88)

INDIAN SPRING TRAIL (PLAT BOOK 37, PAGES 87 & 88)

INDIAN SPRING TRAIL (PLAT BOOK 37, PAGES 87 & 88)

INDIAN SPRING TRAIL (PLAT BOOK 37, PAGES 87 & 88)

INDIAN SPRING TRAIL (PLAT BOOK 37, PAGES 87 & 88)

INDIAN SPRING TRAIL (PLAT BOOK 37, PAGES 87 & 88)

INDIAN SPRING TRAIL (PLAT BOOK 37, PAGES 87 & 88)

INDIAN SPRING TRAIL (PLAT BOOK 37, PAGES 87 & 88)

INDIAN SPRING TRAIL (PLAT BOOK 37, PAGES 87 & 88)

INDIAN SPRING TRAIL (PLAT BOOK 37, PAGES 87 & 88)

INDIAN SPRING TRAIL (PLAT BOOK 37, PAGES 87 & 88)

INDIAN SPRING TRAIL (PLAT BOOK 37, PAGES 87 & 88)

INDIAN SPRING TRAIL (PLAT BOOK 37, PAGES 87 & 88)

INDIAN SPRING TRAIL (PLAT BOOK 37, PAGES 87 & 88)

INDIAN SPRING TRAIL (PLAT BOOK 37, PAGES 87 & 88)

INDIAN SPRING TRAIL (PLAT BOOK 37, PAGES 87 & 88)

INDIAN SPRING TRAIL (PLAT BOOK 37, PAGES 87 & 88)

INDIAN SPRING TRAIL (PLAT BOOK 37, PAGES 87 & 88)

INDIAN SPRING TRAIL (PLAT BOOK 37, PAGES 87 & 88)

INDIAN SPRING TRAIL (PLAT BOOK 37, PAGES 87 & 88)

INDIAN SPRING TRAIL (PLAT BOOK 37, PAGES 87 & 88)

INDIAN SPRING TRAIL (PLAT BOOK 37, PAGES 87 & 88)

INDIAN SPRING TRAIL (PLAT BOOK 37, PAGES 87 & 88)

INDIAN SPRING TRAIL (PLAT BOOK 37, PAGES 87 & 88)

INDIAN SPRING TRAIL (PLAT BOOK 37, PAGES 87 & 88)

INDIAN SPRING TRAIL (PLAT BOOK 37, PAGES 87 & 88)

INDIAN SPRING TRAIL (PLAT BOOK 37, PAGES 87 & 88)

INDIAN SPRING TRAIL (PLAT BOOK 37, PAGES 87 & 88)

INDIAN SPRING TRAIL (PLAT BOOK 37, PAGES 87 & 88)

INDIAN SPRING TRAIL (PLAT BOOK 37, PAGES 87 & 88)

INDIAN SPRING TRAIL (PLAT BOOK 37, PAGES 87 & 88)

INDIAN SPRING TRAIL (PLAT BOOK 37, PAGES 87 & 88)

PIPERS GLEN PLAT NO. 1 (PLAT BOOK 43, PAGES 97-101)

ENCLAVE AT WESTCHESTER (PLAT BOOK 79, PAGES 112 & 113)

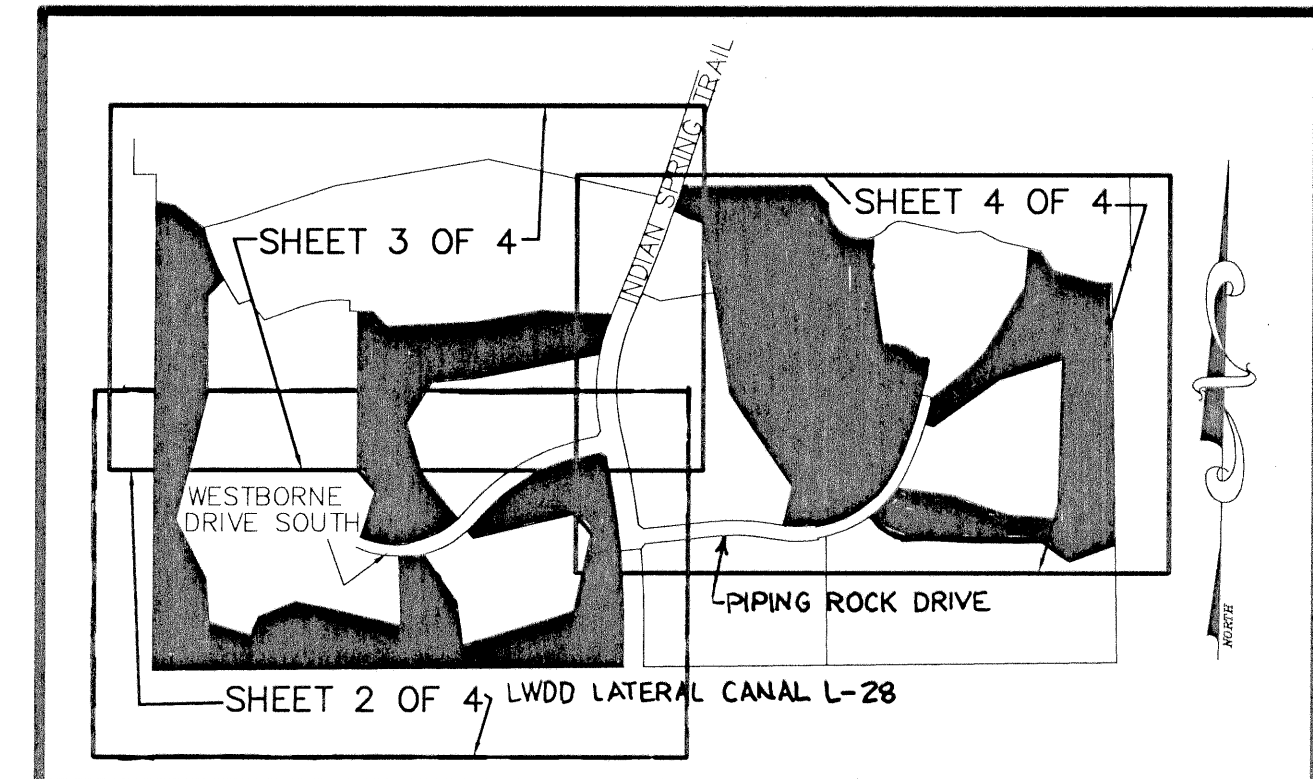
SAWGRASS LAKES HOMES (PLAT BOOK 61, PAGES 175 & 176)

SURVEY NOTES:

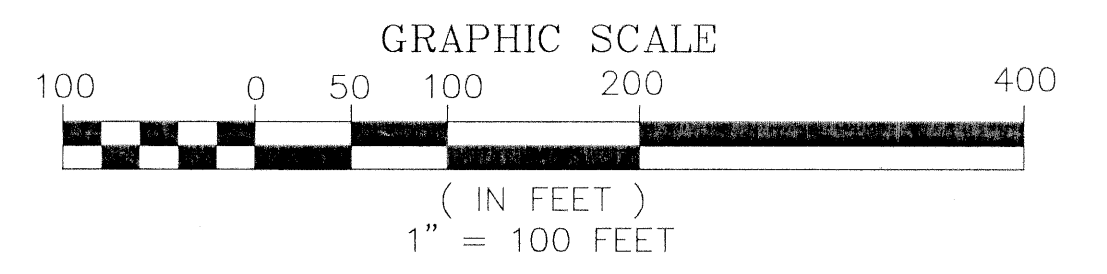
- IN THOSE CASES WHERE EASEMENTS OF DIFFERENT TYPES CROSS OR OTHERWISE COINCIDE, DRAINAGE EASEMENTS SHALL HAVE FIRST PRIORITY, UTILITY EASEMENTS SHALL HAVE SECOND PRIORITY, ACCESS EASEMENTS SHALL HAVE THIRD PRIORITY, AND ALL OTHER EASEMENTS SHALL BE SUBORDINATE TO THESE WITH THEIR PRIORITIES BEING DETERMINED BY USE RIGHTS GRANTED.
- BUILDING SETBACK LINES SHALL BE AS REQUIRED BY CURRENT PALM BEACH COUNTY ZONING REGULATIONS.
- NO BUILDINGS OR ANY KIND OF CONSTRUCTION OR TREES OR SHRUBS SHALL BE PLACED ON AN EASEMENT WITHOUT PRIOR WRITTEN CONSENT OF ALL EASEMENT BENEFICIARIES AND ALL APPLICABLE COUNTY APPROVALS OR PERMITS AS REQUIRED FOR SUCH ENCROACHMENTS.
- BEARINGS SHOWN HEREON ARE TO THE EAST LINE OF "HAMPTON FAIRWAYS PLAT TWO", ACCORDING TO THE PLAT THEREOF, AS RECORDED IN PLAT BOOK 68, PAGES 23 THROUGH 25, BEARING S00°00'00"E.
- P.R.M. - INDICATES FOUND PERMANENT REFERENCE MONUMENT "BRUCE CARTER & ASSOCIATES, UNLESS NOTED OTHERWISE.
- P.M. - INDICATES PERMANENT REFERENCE MONUMENT LB 3591
- ORB - DENOTES OFFICIAL RECORDS BOOK
- LAE - DENOTES LIMITED ACCESS EASEMENT
- FND - DENOTES FOUND
- TYP - DENOTES TYPICAL
- NO - DENOTES NUMBER
- C - DENOTES CENTERLINE
- N.T.S. - DENOTES NOT TO SCALE
- "NOTICE" THIS PLAT, AS RECORDED IN ITS GRAPHIC FORM, IS THE OFFICIAL DEPICTION OF THE SUBDIVIDED LANDS DESCRIBED HEREIN AND WILL, IN NO CIRCUMSTANCES BE SUPPLANTED IN AUTHORITY BY ANY OTHER GRAPHIC OR DIGITAL FORM OF THE PLAT. THERE MAY BE ADDITIONAL RESTRICTIONS THAT ARE NOT RECORDED ON THIS PLAT THAT MAY BE FOUND IN THE PUBLIC RECORDS OF PALM BEACH COUNTY.
- LME - LAKE MAINTENANCE EASEMENT
- DE - DRAINAGE EASEMENT
- LWDD - LAKE WORTH DRAINAGE DISTRICT
- U.E. - INDICATES UTILITY EASEMENT.
- POB - POINT OF BEGINNING.

NOTES COORDINATES, BEARINGS AND DISTANCES

COORDINATES SHOWN ARE GRID
DATUM = NAD 83 1990 ADJUSTMENT
ZONE = FLORIDA EAST
LINEAR UNIT = US SURVEY FEET
COORDINATE SYSTEM 1983 STATE PLANE
TRANSVERSE MERCATOR PROJECTION
ALL DISTANCES ARE GROUND
SCALE FACTOR = 1.0000322
GROUND DISTANCE X SCALE FACTOR = GRID DISTANCE



KEY MAP N.T.S.



P.R.M.#	NORTHING	EASTING	P.R.M.#	NORTHING	EASTING	P.R.M.#	NORTHING	EASTING	P.R.M.#	NORTHING	EASTING
P.R.M.1	790325.40	938059.15	P.R.M.11	789655.88	939150.12	P.R.M.21	788753.40	938966.76	P.R.M.31	789250.04	939258.03
P.R.M.2	790376.48	937905.52	P.R.M.12	789605.61	939223.36	P.R.M.22	788907.12	939112.11	P.R.M.32	789390.14	939293.90
P.R.M.3	790494.94	937943.87	P.R.M.13	789601.75	939266.25	P.R.M.23	788868.38	939408.70	P.R.M.33	789562.55	939503.77
P.R.M.4	790512.13	937949.30	P.R.M.14	789402.78	939235.25	P.R.M.24	788768.10	939703.29	P.R.M.34	789638.43	939576.01
P.R.M.5	790523.56	938364.69	P.R.M.15	789016.85	939105.34	P.R.M.25	788748.09	939964.91	P.R.M.35	789982.74	939779.81
P.R.M.6	790427.58	938728.45	P.R.M.16	788903.68	938681.34	P.R.M.26	789092.43	939975.55	P.R.M.36	790192.06	939796.43
P.R.M.7	790246.64	938970.47	P.R.M.17	788703.51	938679.65	P.R.M.27	789346.59	939978.76	P.R.M.37	790188.72	939811.05
P.R.M.8	790134.72	938960.17	P.R.M.18	788701.05	938504.95	P.R.M.28	789596.41	939984.80	P.R.M.38	790074.47	939929.59
P.R.M.9	789667.93	939019.62	P.R.M.19	788908.73	938551.88	P.R.M.29	789483.93	939645.54	P.R.M.39	790024.85	940101.05
P.R.M.10	789668.71	939101.70	P.R.M.20	789405.27	938213.82	P.R.M.30	789236.86	939302.34	P.R.M.40	790006.05	940245.27
P.R.M.41	788609.14	940276.64	P.R.M.51	790267.00	935407.57	P.R.M.61	788144.89	936480.33	P.R.M.71	788616.10	936860.61
P.R.M.42	788517.17	940036.69	P.R.M.52	789989.80	935517.50	P.R.M.62	788519.54	936464.24	P.R.M.72	788659.20	936826.44
P.R.M.43	788619.10	939884.54	P.R.M.53	789897.78	935432.90	P.R.M.63	788522.72	936510.81	P.R.M.73	789048.13	937373.79
P.R.M.44	788614.91	939542.79	P.R.M.54	789367.79	935436.64	P.R.M.64	788522.11	936568.21	P.R.M.74	789055.01	937419.41
P.R.M.45	788635.39	939106.21	P.R.M.55	788706.85	935276.80	P.R.M.65	788530.10	936599.96	P.R.M.75	789081.68	937531.18
P.R.M.46	788690.53	939014.16	P.R.M.56	788396.13	935437.90	P.R.M.66	788278.10	936775.80	P.R.M.76	789063.04	937561.33
P.R.M.47	787899.93	935170.76	P.R.M.57	788157.19	935460.51	P.R.M.67	788043.99	936810.39	P.R.M.77	788189.06	937664.42
P.R.M.48	784099.78	935156.15	P.R.M.58	788080.66	935687.99	P.R.M.68	788227.35	937395.34	P.R.M.78	787935.94	937665.86
P.R.M.49	790410.68	935151.11	P.R.M.59	788186.66	935719.57	P.R.M.69	788642.92	937484.40	P.R.M.79	787918.63	936465.95
P.R.M.50	790343.69	939310.13	P.R.M.60	788269.87	935920.95	P.R.M.70	788751.68	937388.49	P.R.M.80	788620.77	936527.20
P.R.M.81	788582.34	936504.11	P.R.M.86	789449.04	936628.98	P.R.M.91	789771.22	936852.17	P.R.M.96	788859.59	936332.94
P.R.M.82	788600.24	936551.02	P.R.M.87	789470.30	936853.64	P.R.M.92	789743.60	936587.98	P.R.M.97	788690.80	936857.14
P.R.M.83	788722.18	936776.51	P.R.M.88	789604.76	937520.23	P.R.M.93	789823.28	936309.93	P.R.M.98	788765.30	936923.85
P.R.M.84	788965.11	936583.93	P.R.M.89	789812.24	937581.00	P.R.M.94	789822.72	936230.62	P.R.M.99	789805.63	938144.76
P.R.M.85	789231.58	936500.39	P.R.M.90	789837.14	937211.16	P.R.M.95	788972.74	936236.62			

Subdivision Indian Spring Golf Course
BOOK 27 PAGE 92
FLOOD MAP # 2001 1/26/03
FLOOD ZONE B-1H
ROAD # 35
SE 73-52
TAZ 453
ZIP CODE 33437
PUD NAME Indian Spring